

BDC HD

BUSINESS
DEVELOPMENT
CENTER
HEIDELBERG



Co-financed by:



EUROPAISCHE UNION
Europäische Union für regionale Entwicklung



Investition in Ihre Zukunft.



Baden-Württemberg

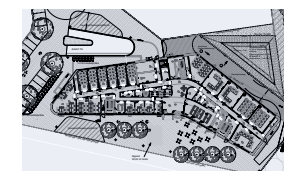
MINISTERIUM FÜR WIRTSCHAFT, ARBEIT UND WOHNUNGSBAU

INNOVATION NEEDS SPACE

INNOVATION NEEDS SPACE

CONTENTS

| 4



01 / CONCEPT
Business Development
Center Heidelberg

| 8



**02 / BUILDING +
NETWORK**
High-End Performance

| 10



03 / PEOPLE
Principles of
Development

| 12



04 / SUPPORT
Expert support

| 14



04 / SUPPORT
The Heidelberg
Innovation Park (HIP)

| 16



05 / HEIDELBERG
Location matters

"YOUR TASK IS NOT TO FORESEE THE FUTURE, BUT TO ENABLE IT."

ANTOINE DE SAINT-EXUPÉRY

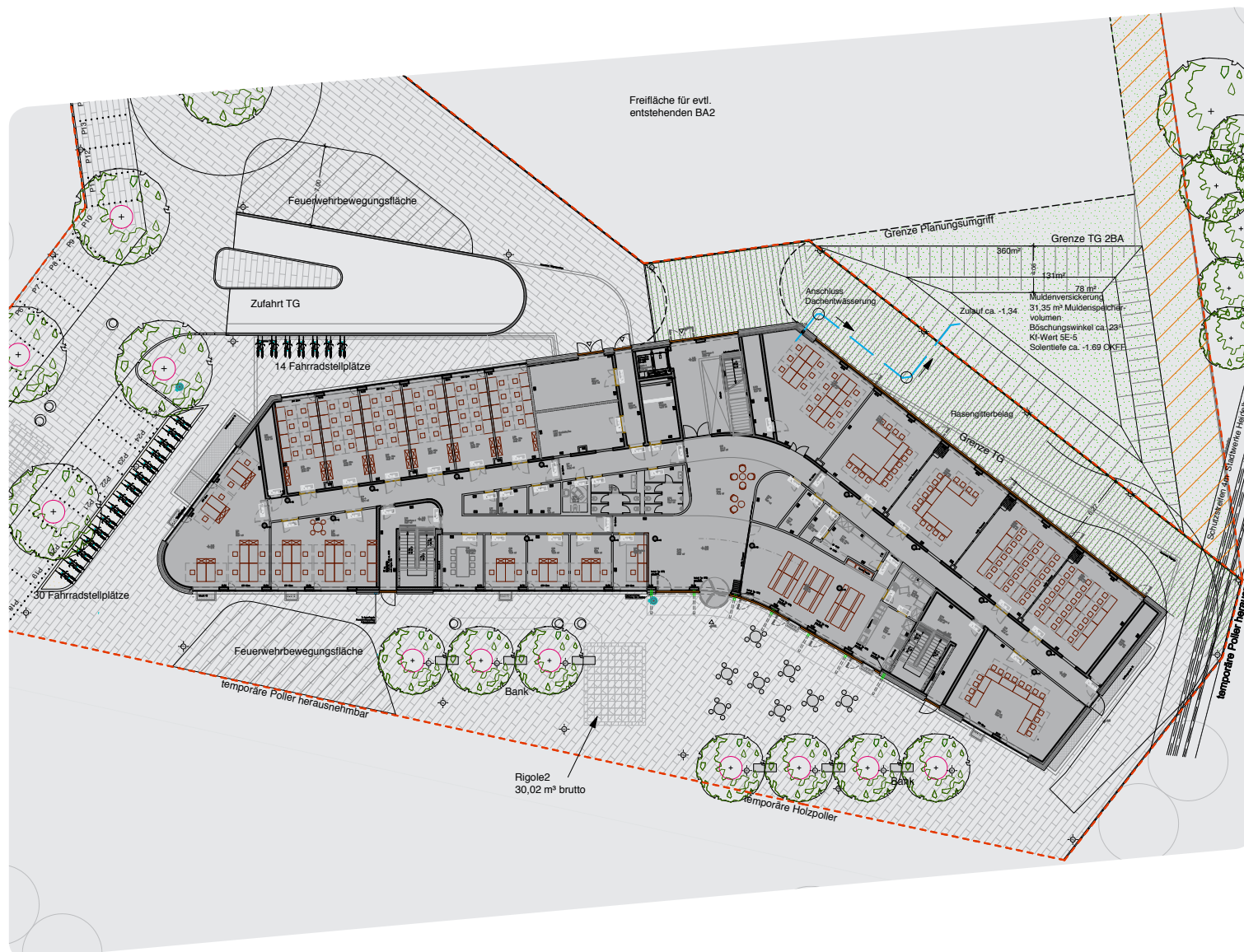
We believe that creative people love creating solutions and having fun using their ingenuity. They like to be surrounded by like-minded colleagues and startups. Our workspace will offer flexibility in rental conditions and the future expansion of your business. Co-working and a dense network of experts injecting new impetuses are naturally part of the package.

Your requirements will be met with the City of Heidelberg's plans for a new technology-driven campus – the Heidelberg Innovation Park.



EXTENSIVE, FLEXIBLE SPACE – PERFECTLY PRE-EQUIPPED

The illustrated plan shows details of the Business Development Center's ground floor plus the surroundings. Three floors plus one underground parking level are planned altogether.



Whether you are looking for offices, coworking spaces, BSL-2 wet labs, a workshop/garage or would like to use a clean room, our new, versatile Business Development Center provides you with full flexibility. Heating, cooling, powerful mechanical ventilation and media piping are an integral part of our offer. A cafeteria, a conference center and facility management additionally cater to your needs.

As a future tenant, you will benefit from the available technical infrastructure that allows plug-and-play connectivity.

Investment in your future

The BDC HD will be partly financed by a European Regional Development Fund (ERDF).



FOR FURTHER INFORMATION PLEASE CONTACT:

Moritz Schindler

Phone: +49 6221 50257-22

Mail: moritz.schindler@heidelberg.de

www.technologiepark-heidelberg.de/en/bdc/

OUR OFFER – CREATIVE SPACE



Construction of the Business Development Center just started in September 2017. The later building will not only look amazing from an architectural point of view, but will function as a perfect R&D-facility for young and small, medium-sized enterprises.

The construction site will comprise:

| | |
|--|-------------------------|
| Total gross floor area | 76,400 sq ft / 7,095 m² |
| Total rentable area | 47,400 sq ft / 4,400 m² |
| Total costs | €17.5 million |
| 31 offices | |
| 6 technical offices | |
| 17 labs | |
| 2 clean rooms each with a flexible area of | |
| 2,600 sq ft / 242 m² | |

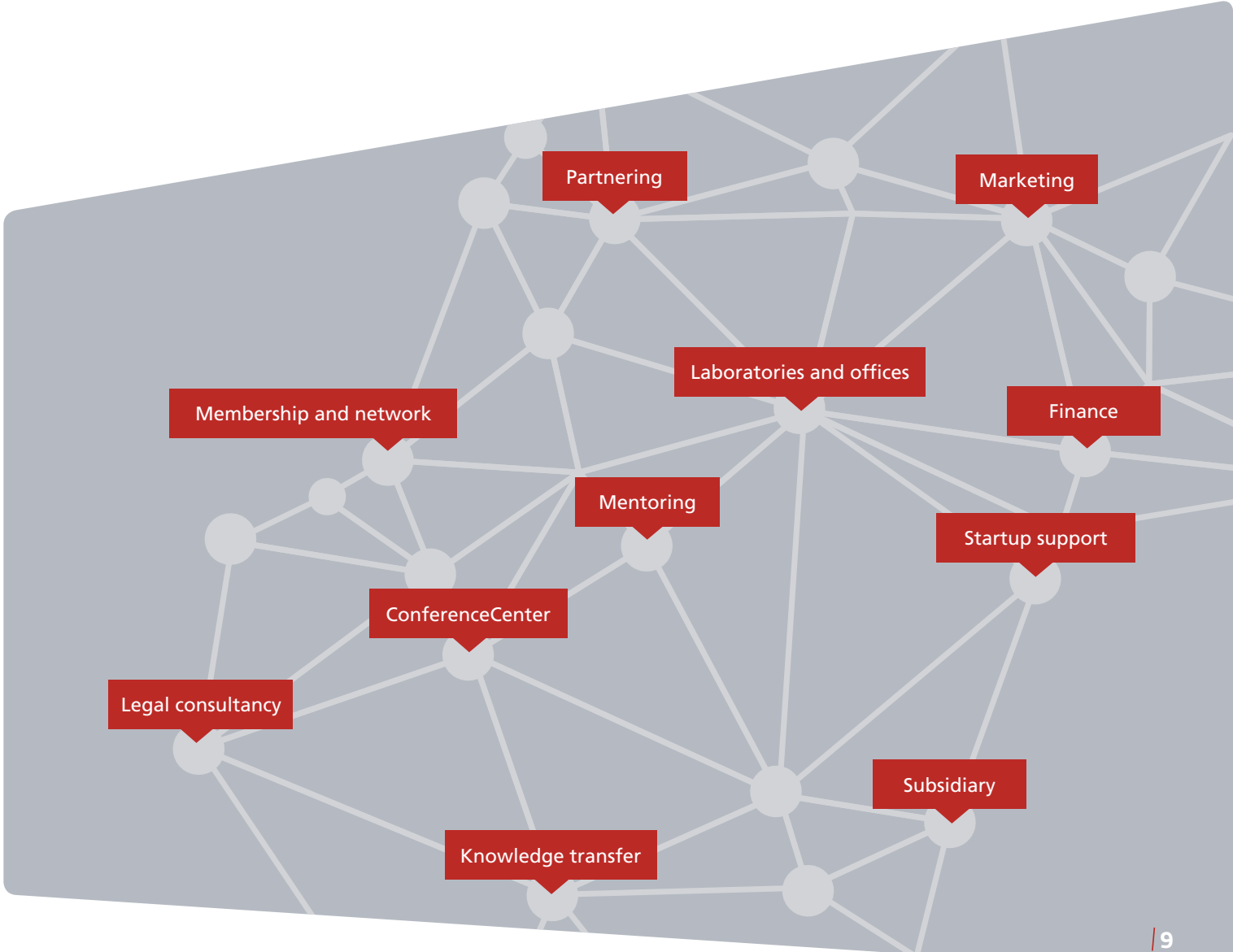
You will also find:

- Underground and above-ground parking
- Cafeteria
- Conference facilities and boardrooms
- Accelerator and startup support
- Dense, extensive networks and cooperation partners

YOUR ADVANTAGE – FULL SUPPORT

In addition to the pure rental space every tenant of the BDC HD will benefit from the close cooperation between the host of the BDC HD and the Heidelberg Technology Park. Both facilities offer a specific support for every tenant, for Startups and for interested young talents thinking about starting their own business.

The BDC HD offers two specially provided coworking-offices for meeting and working together with people just like you. Workplaces can be rent for a month, a week or just one day – perfect to work on an own business idea.



HAVING A GREAT IDEA IS A NICE THING. SUCCESSFULLY TURNING IT INTO AN IMPACT ON HUMANITY IS THE REAL CHALLENGE.



THE BEST THING IS MEETING PEOPLE WHO THINK THE SAME WAY AND LOVE TO CO-CREATE.

Bringing an idea to market and hopefully disrupting the market takes time and, most of all, passion, self-belief and focus. Heidelberg Technology Park provides this ecosystem and has supported hundreds of young, innovative companies and thousands of brilliant minds since it was founded in 1984.

We encourage promising projects and business ideas, using several support programs like:

LifeScience Accelerator: www.lifescience-bw.de

UP2B Accelerator: <https://up2b.io/>



Co-financed by:



GEFÖRDERT VOM MINISTERIUM FÜR WIRTSCHAFT, ARBEIT UND WOHNUNGSBAU BADEN-WÜRTTEMBERG AUS MITTELN DES EUROPÄISCHEN SOZIALFONDS



EVERY GOOD IDEA DESERVES A CHANCE! SUPPORT FOR SCIENTIFIC AND TECHNOLOGICAL STARTUPS INTERESTED IN ENTREPRENEURSHIP AND INVESTMENT OPPORTUNITIES.



Our Startup Support Bureau is Heidelberg's one-stop source for information and advice for those interested in entrepreneurship and investment opportunities. An interdisciplinary team combines both business and scientific expertise to offer consultation on various startup-related matters. Whether providing feedback on business models or suggestions for convincing pitch decks, the startup support team offers a range of services and programs for truly hands-on support.

Now that the American forces have left Heidelberg, the vacated urban spaces are full of possibility. A technology, innovation and manufacturing park, where founders, students, investors, industrialists and scientists can meet to jointly develop the technologies of tomorrow, is being established in such an area. No city in southern Germany is more suitable than Heidelberg for the fertile exchange between science and business, and that between startups, large companies and research institutions.



FOR FURTHER INFORMATION PLEASE CONTACT:

Thomas Prexl / Director

Phone: +49 6221 71411-162

Mail: thomas.prexl@heidelberg-startup-partners.de

www.heidelberg-startup-partners.de



HEIDELBERG INNOVATION PARK

HIP – HOTSPOT FOR TECHIES

Space is limited within the city boundaries, but still always in demand. With the departure of the American forces, Heidelberg has the unique opportunity to convert the former military grounds into a modern site for innovation. The Heidelberg Innovation Park (HIP) represents the city's ambition to transform the former Patton Barracks into a new technology park for start-ups and established companies with a high-tech background.

HIP – a new playground for creative minds right in the heart of Heidelberg, one of the best known historical cities in Germany with a strong presence of internationally established companies. There could be no better place to start your business.

FOR FURTHER INFORMATION PLEASE CONTACT:

Entwicklungsgesellschaft Patton Barracks mbH & Co. KG

Phone: +49 6221 58-13000

Mail: Dez5-Konversion@Heidelberg.de

Amt für Wirtschaftsförderung und Beschäftigung Heidelberg

Phone: +49 6221 58-30000

Mail: wirtschaftsfoerderung@heidelberg.de

LOCATION MATTERS! A GERMAN POWERHOUSE...

Heidelberg is at the heart of the Rhine-Neckar Metropolitan Region's strong economy.

- > Ruprecht-Karls-University, established in 1386, 12 university hospitals
- > German Cancer Research Center, European Molecular Biology Lab
- > Printed Electronics Lab, SAP, NEC, SAS
- > Perfect strategic location: 45 minutes to Frankfurt International Airport
- > Neighbouring Austria, Belgium, France, Italy, The Netherlands, Switzerland, Italy
- > Good quality of life, sports, recreation, culture and heritage
- > Competitive workforce, excellence in research and education



...MARKED BY SCIENCE AND CULTURE



Heidelberg is considered one of the most beautiful towns in Germany. Both the old town and the Heidelberg castle in particular enjoy a worldwide reputation, attracting 12 million international visitors plus 1.4 million bed-nights per year. The city literally breathes science and culture. The oldest university in Germany was established here in 1386 and has been recognized by the German Ministry for Science and Education as one of Germany's top elite universities, leading to substantial subject-related additional grants.

The numerous companies based in the Rhine-Neckar Metropolitan Region and in Heidelberg, with their myriad competencies, offer excellent collaboration opportunities. Interdisciplinary exchange is facilitated by the various high-tech industries that stimulate, support and promote one another.

Heidelberg has become a hub for Life Sciences and Printed Organic Electronics and pioneers in prototyping and small-scale manufacturing. The synergy between research and industry amplifies the R&D potential, motivating numerous spinoffs on a daily basis.



IMPRINT

Published by: **Technologiepark Heidelberg GmbH // Technologieförderung Heidelberg GmbH, Dr. André H.R. Domin**

Concept and realization: **Dr. André H.R. Domin and Moritz Schindler**

Art direction and editorial design: **markenfaktur, Heidelberg**

Printed by: **deVega Medien GmbH, Augsburg**

Published: **March 2019**

Picture Credits:

Front: **RKW Architektur +**

P2: **RKW Architektur +**

P4,5: **RKW Architektur +**

P6: **Landschaftsarchitekturbüro Lulay**

P7: **InnovationLab GmbH, Heidelberg**

P8: **InnovationLab GmbH, Heidelberg**

P10,11: **Fotolia: StockPhotoPro / contrastwerkstatt / Syda Productions**

P12: **Heidelberg Startup Partners e.V.**

P13: **iStock: darren baker / Cathy Yeulet**

P14,15: **Hosoya Schäfer Architects, Zürich**

P16,17: **Fotolia: Sergey Novikov / eyetronic**

P19: **RKW Architektur +**





Technologiepark
Heidelberg GmbH



Technologieförderung
Heidelberg GmbH

For further information please feel free to contact us:

.....
Technologiepark Heidelberg GmbH // Technologieförderung Heidelberg GmbH

.....
Im Neuenheimer Feld 582

.....
69120 Heidelberg

.....
Phone: +49 6221 50257-00

.....
www.technologiepark-heidelberg.com // www.technologiepark-heidelberg.de/en/bdc/